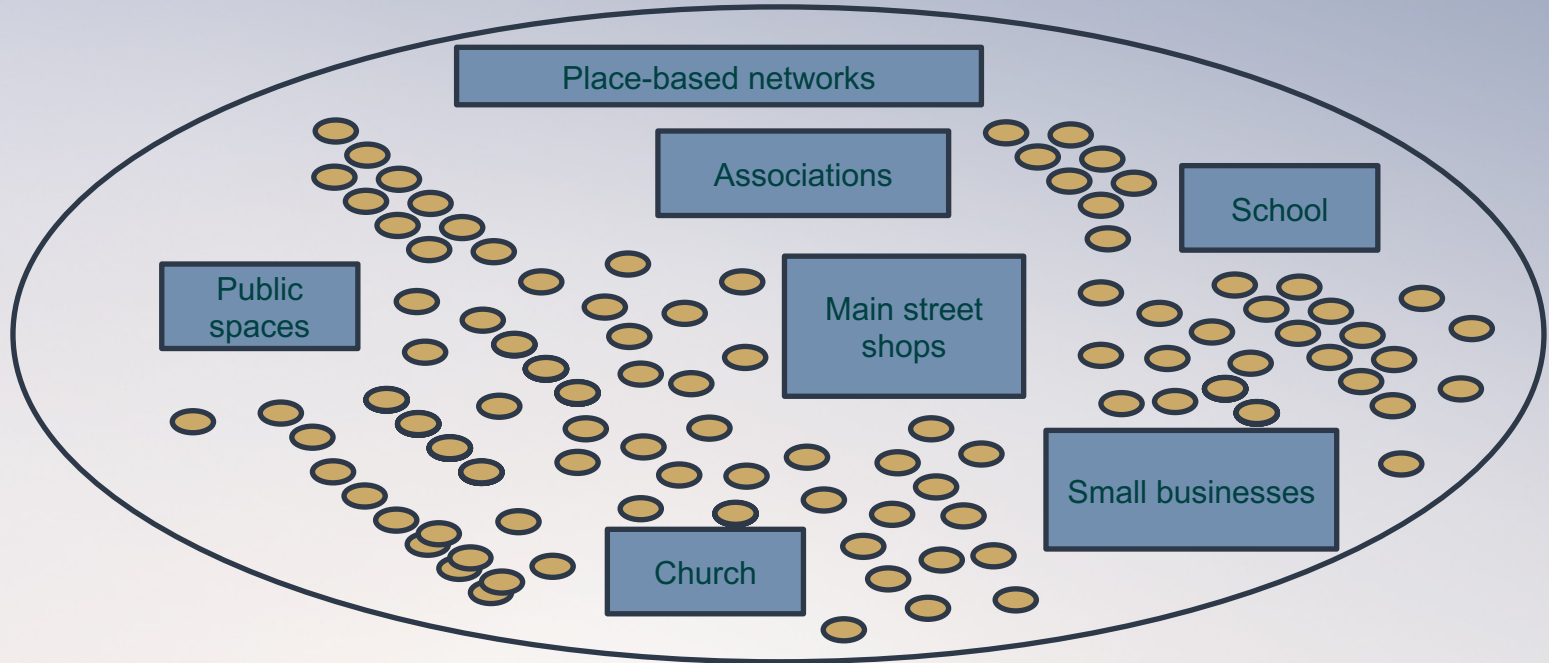


Building a flourishing
neighborhood with highly
connected and empowered people

Seth D. Kaplan
Johns Hopkins University



Ensure everyone lives in a flourishing neighborhood



Strong, overlapping institutions



Kinship



Religious



Education



Associations



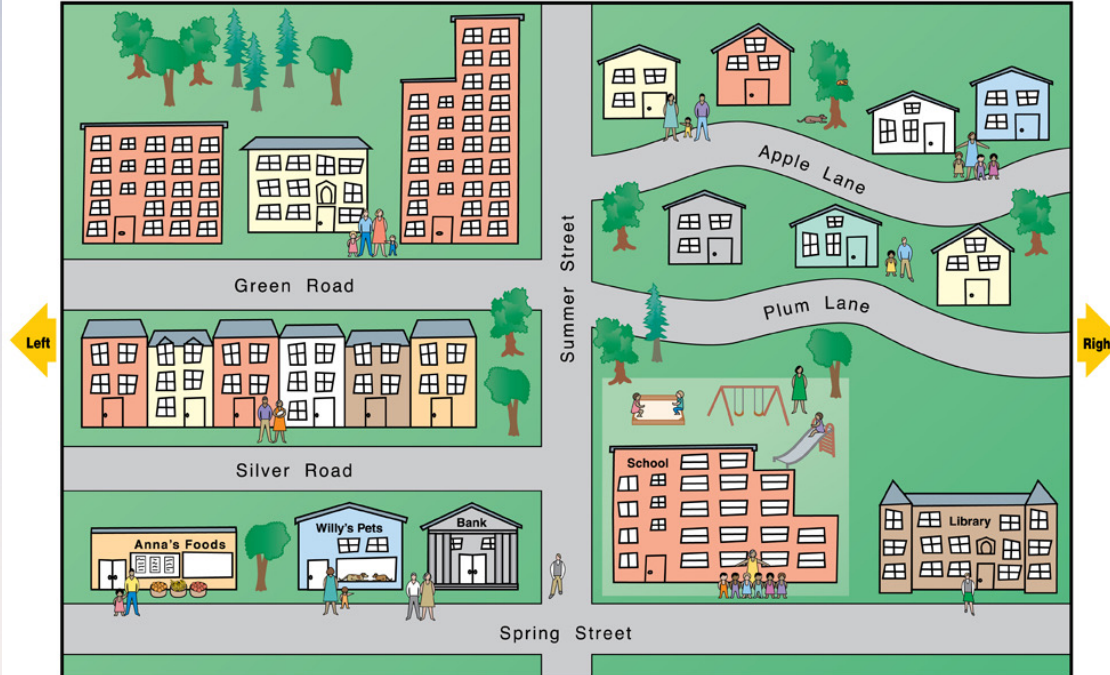
Economic



Political

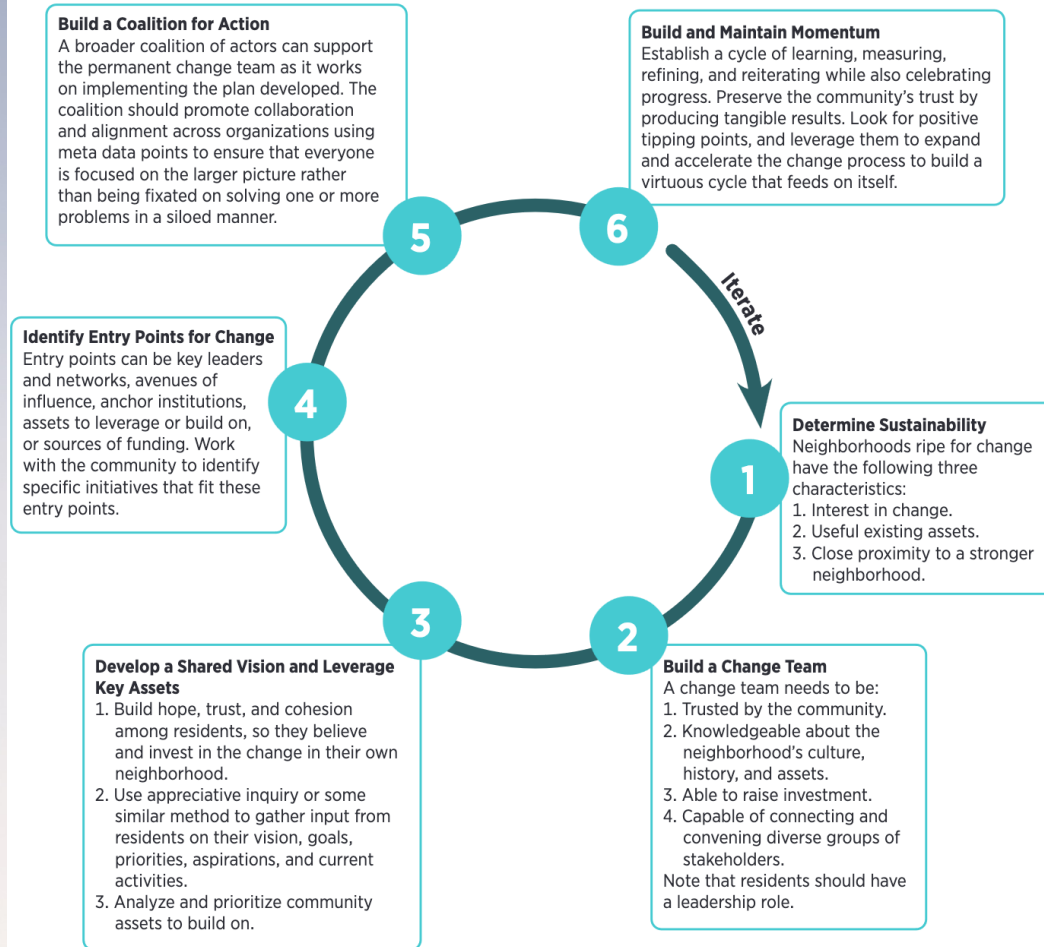
Supporting landscape

Neighborhood Map



Building Influence

FIGURE 6. INFLUENCE AND ENGAGEMENT FRAMEWORK



Momentum is key

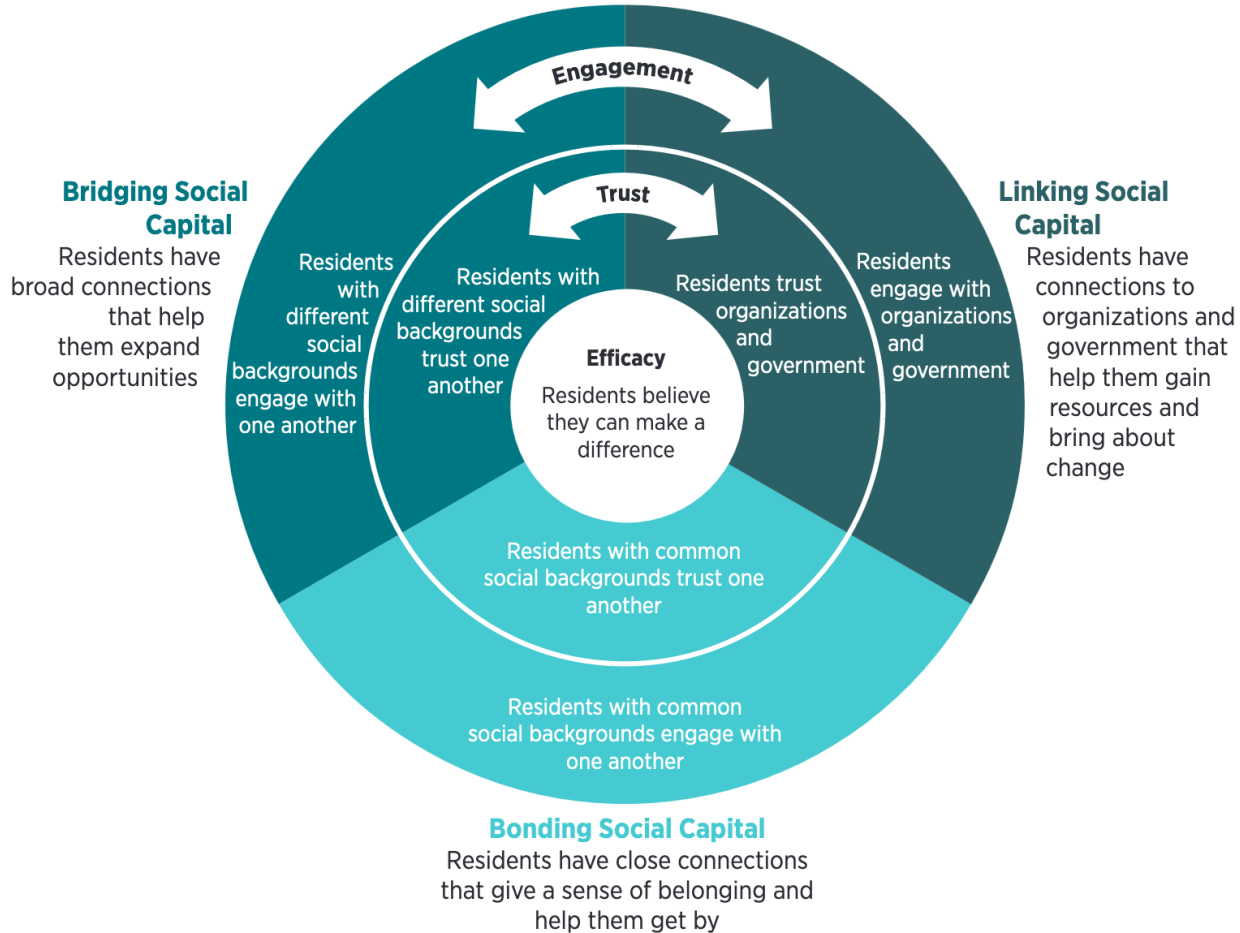
Neighborhood Flourishing Continuum



Flourishing depends on

- Micro institutions (Household, interfamily, informal networks)
- Community institutions (efficacy/bonding of schools, churches, businesses, associations)
- Bridging ties (interlocal connectivity/influence)
- Built/physical environment
- Sources of income/wealth
- Policies/culture/economy
- Levels of safety/violence
- Practical/political skills/knowledge

FIGURE 3. COMMUNITY SOCIAL CAPITAL MODEL



Neighborhood flourishing is promoted by

- Establishing a neighborhood quarterback
- Centering government around neighborhoods
- Strengthening key micro, intra- and inter-local institutions
- Using an ABCD and community empowerment lens
- Bolstering community economic ties and wealth producing capacity
- Reshaping physical landscape

Tipping Point

At-scale investments in built landscapes, economy, education, and social dynamics

Emergent, self-sustaining investment in relationships, property, and business

Reversing the cycle puts neighborhoods on the path to self-sustaining health

Decline and poverty

Growth and wealth creation



- Ensure every community is rich in institutions (schools, civic associations, churches, govt) and meeting places (parks, cafes)
- Use education to provide every student with 1) roots that come from a sense of pride in their home, 2) wings that give them the belief they can aspire to any path in life
- Strengthen the home and surrounding community – the first and arguably the most important classrooms
- Use early warning systems and prevention where possible
- Take an incremental approach to improvement
- Encourage government and nonprofits to switch from a siloed program focus to a place and neighbor-based approach

An urgent exploration of
why American society is in trouble,
and how to fix it,
starting with the places we call home.

<https://sethkaplan.org/>

