

Kentucky Community Schools Initiative

Your action plan is ready! Now what?



The Prichard Committee

Building a Groundswell for a Big Bold Future

Objectives

- Get grounded in the foundation and goals of the Kentucky Community Schools Initiative.
- Share School Action Plan highlights and make connections to the 5 Big Shifts.
- Understand how check-ins work during implementation
- Share insights and takeaways



The Prichard Committee


Building a Groundswell for a Big Bold Future

A Path to a Larger Life



**Family,
Community,
and Educator
Partnership**

Each contributing their expertise and playing a role



Better Student Outcomes

K-readiness, attendance, graduation rates, career readiness, teacher retention, and school climate

Improve Quality of Life

Economic & social well-being, increased citizen engagement



Post-High School Success

Prepared for the economy of the future



Community Builder

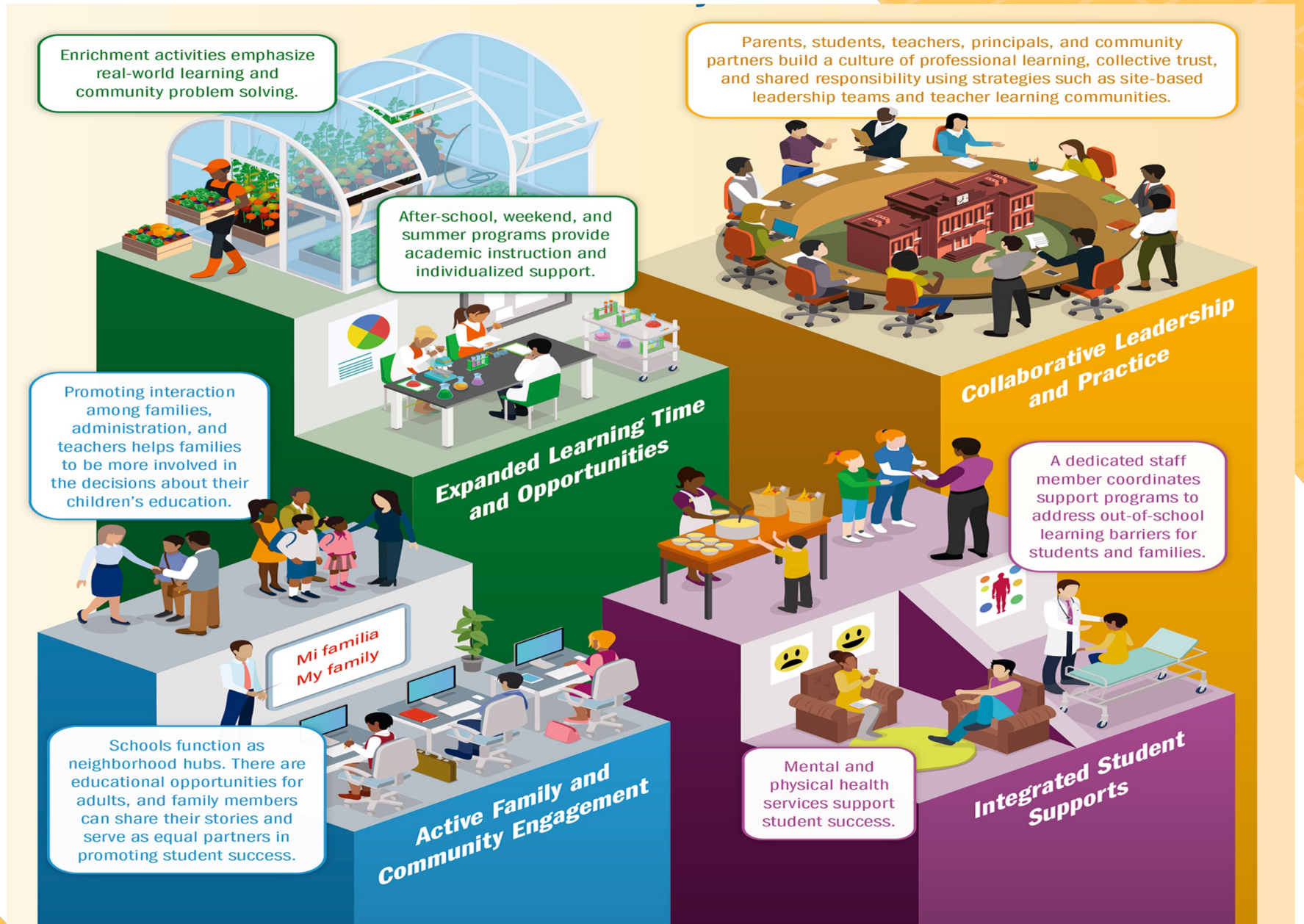
- 1. Introduce yourself and share your connection with the Kentucky Community Schools Initiative.**
- 2. What is one thing you hope to take away from this session?**



The Prichard Committee

Building a Groundswell for a Big Bold Future

Four Pillars of Community Schools



KCSI

The Why

- To boost education and economic well-being outcomes for Kentuckians
- To get back on track with our educational gains and secure real-world success for our students
- To create a groundswell of communities responding to the unique needs of students locally



The Prichard Committee

Building a Groundswell for a Big Bold Future

KENTUCKY COMMUNITY SCHOOLS INITIATIVE

A Groundswell of Community Partnerships to Transform Student Outcomes



About the Prichard Committee

We are a citizen-led, nonpartisan, nonprofit with a singular mission of realizing a path to a larger life for Kentuckians with education at the core.

For more than four decades we have studied pressing education issues, helped inform the public and policymakers of our findings, and engaged communities to celebrate success and to design unique solutions to Kentucky's challenges.

The Prichard Committee is building on this legacy to spearhead hyper-local, data-driven strategies through the Kentucky Community Schools Initiative.

This model champions collaborative leadership over isolation, shifting from merely doing "to" families and communities to actively listening and working "with" them.

Our strength lies in innovation, collaboration, and in communities coming together to create a groundswell of action to improve education and economic outcomes in Kentucky.



The Prichard Committee

Building a Groundswell for a Big Bold Future

THE BRIEF

KCSI Brief

3 Key Goals:

1. School outcome data in the 40 KCSI pilot schools and 20 districts **show improvements** in academic and non-academic student indicators, and **we know how to replicate** in other schools across Kentucky.
2. We have state, district, and school-level supports and policies in place, so educators, local community members, families, and students **effectively utilize in- and out-of-school** resources and opportunities.
3. The needs and resources for **Family Resource Youth Service Centers** to continue to work at their full potential are clear.



The Prichard Committee

Building a Groundswell for a Big Bold Future

Key KCSI Activities

Increase local coordination:

- 20 districts, 40 schools
- 20 District Directors; 40 FRYSCs; 5 State Coaches
- 4 pillars, 8 pipeline services
- System Building through the 5 Big Shifts

Increase State Coordination

- Local learning will inform and strengthen policy required for statewide impact

Establish a State Steering Committee

- Guides implementation, evaluation, and collaborative state leadership

Examine Kentucky's current education

and service delivery through lens of Community Schools

- Includes better understanding of what FRYSC needs



The Prichard Committee

Building a Groundswell for a Big Bold Future

THE 5 BIG SHIFTS

Moving From...



1. **More programs TO** increased local coordination
2. **Silos TO** Collaborative Leadership
3. **Random acts of programming TO** intentionality for high-impact
4. **Schools working alone TO** groundswell action
5. **Doing “for” TO** listening and doing “with” Families and Communities



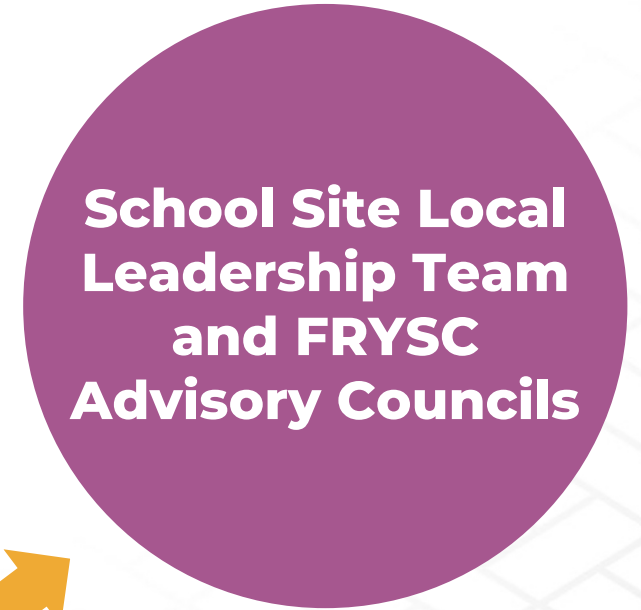
The Prichard Committee

Building a Groundswell for a Big Bold Future

Local Implementation Collaborative Leadership

Prichard Committee and State Steering Committee

- Community Engagement
- Alignment & Integration
- Professional Learning Opportunities
 - Data & Evaluation
 - Finance & Resources
 - Policy & Practice



Community at the table and focus on existing community assets

KY Existing Foundation

KCSI investment in district leadership position



The Prichard Committee

Building a Groundswell for a Big Bold Future

Timeline

- **Community Conversations and Action Plan Development Jan-May**
- **School Action Plans due to Prichard Committee May 30th**
- **Review process June 3 – June 21 with Prichard Engagement Team**
- **Feedback given to District Directors by June 28**
- **Implementation and Continuous Improvement Process begins July 1 – June 30**



The Prichard Committee

Building a Groundswell for a Big Bold Future

Share Highlights

- **Action Plan—Highlights**
 - Conversation Highlights
 - Bright Spots/Areas of Concern
 - Pillar-Based Strategies with Performance Measures

- How do these action plan highlights push on the 5 Big Shifts?



The Prichard Committee

Building a Groundswell for a Big Bold Future

During Implementation

- **Meet with Local Leadership Team every 4-6 weeks.**
- **Meet with Community Schools Team at least 2x during the Fall semester.**
- **District Director Monthly Report and Ongoing Learning Exchanges**
- **Share updates regularly with SBDM, FRYSC Advisory Council, and local Board of Education.**
- **Promote wins and build momentum—pics, stats**



The Prichard Committee

Building a Groundswell for a Big Bold Future

During Implementation

Sample Meeting Objectives:

- Review Action Plan
- Make changes as needed

Sample Meeting Agenda:

1. New data on how are we doing?
2. New information on the story behind the curve?
3. New partners that might have a role to play in turning the curve?
4. New information on what would work to turn the curve?
5. Identity Action Steps to improve our strategies and turn the curve?
6. How can we promote wins and build momentum?



The Prichard Committee

Building a Groundswell for a Big Bold Future

Time to Collaborate

- How can the guiding agenda questions drive the work?
- What have you heard in this or another presentation that really resonates with you and why?
- What is the first thing you will initiate as a result of this session when you return to your sphere of influence?
- What other information or resources do you need?



The Prichard Committee

Building a Groundswell for a Big Bold Future

Kentucky Community Schools Initiative

“Action Plans are ready! Now what?”

Keric Seals: keric@prichardcommittee.org

KY Community Schools State Coach, Prichard Committee

Andrea McKeehan: andream@prichardcommittee.org

KY Community Schools State Coach, Prichard Committee

Travis M. Marcum: Travis@prichardcommittee.org

Sr. Director KY Community Schools, Prichard Committee

Donnie Hale: HaleD@iel.org

Southern Regional Deputy Director, Coalition for Community Schools



The Prichard Committee

Building a Groundswell for a Big Bold Future