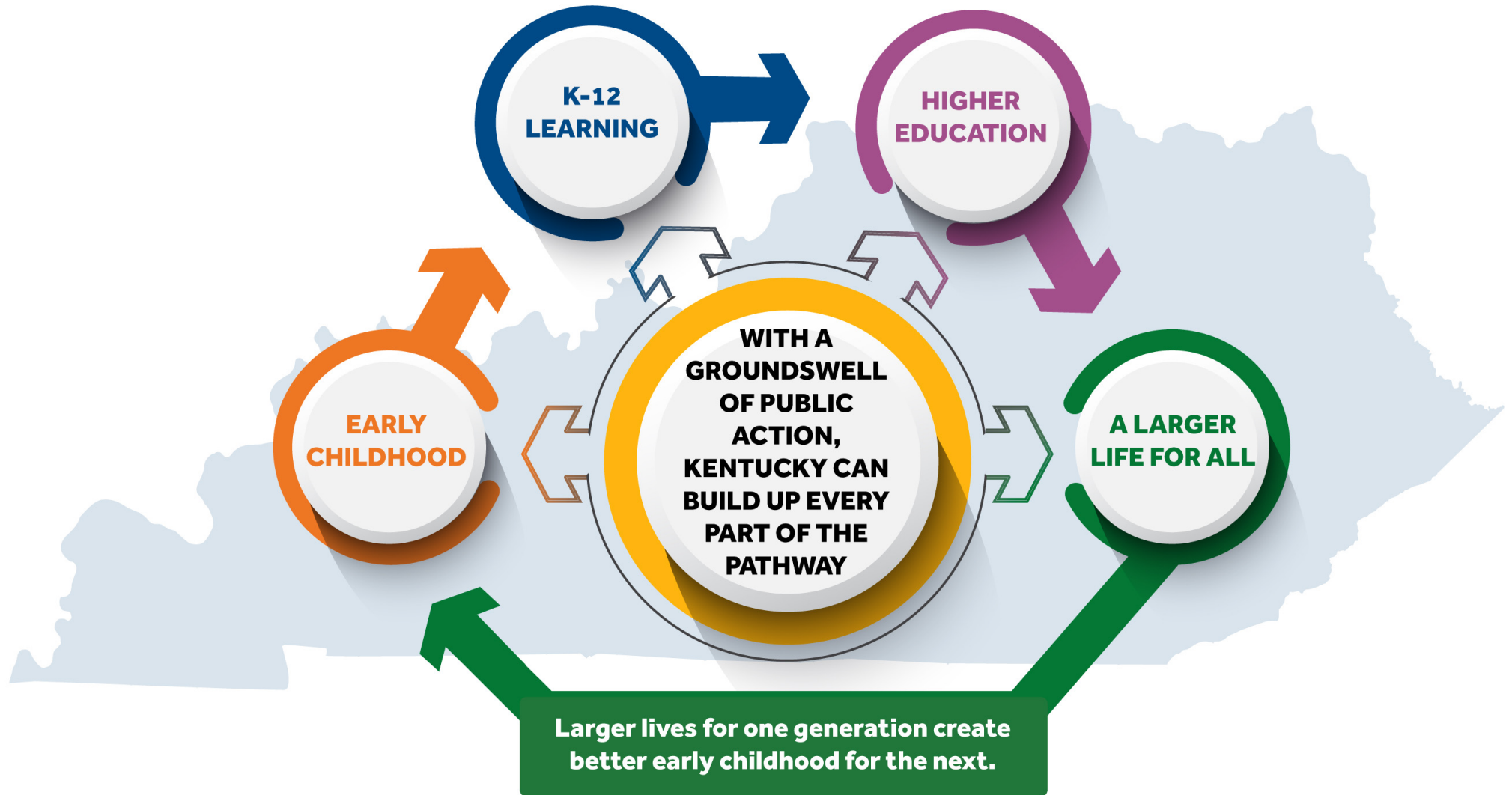


Building a Groundswell



Join us and build the Groundswell!

Groundswell Profiles Bring You Local Data

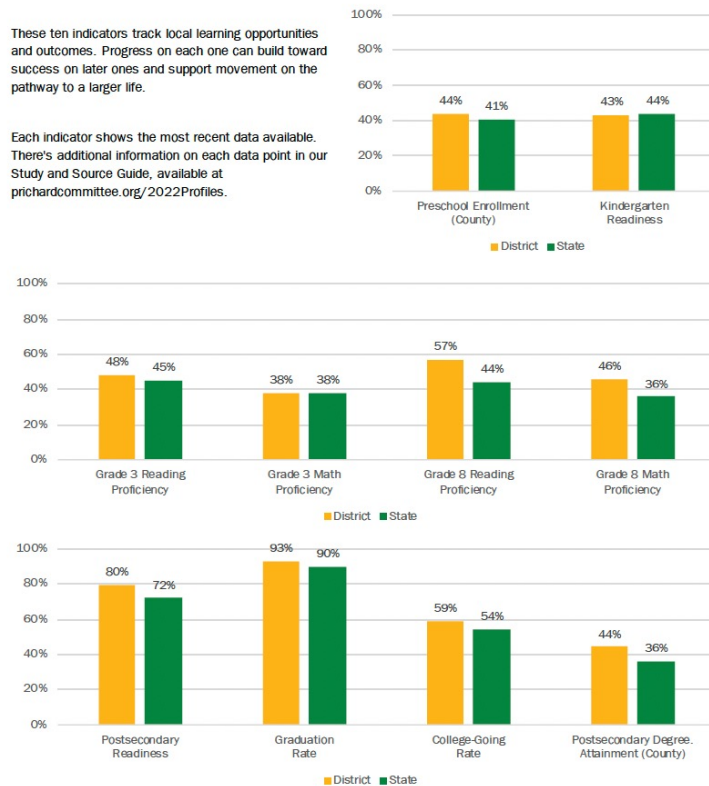


2022 Groundswell Profile Madison County Public Schools

HOW FAR ALONG IS YOUR COMMUNITY ON THE PATH TO A LARGER LIFE?

These ten indicators track local learning opportunities and outcomes. Progress on each one can build toward success on later ones and support movement on the pathway to a larger life.

Each indicator shows the most recent data available. There's additional information on each data point in our Study and Source Guide, available at prichardcommittee.org/2022Profiles.

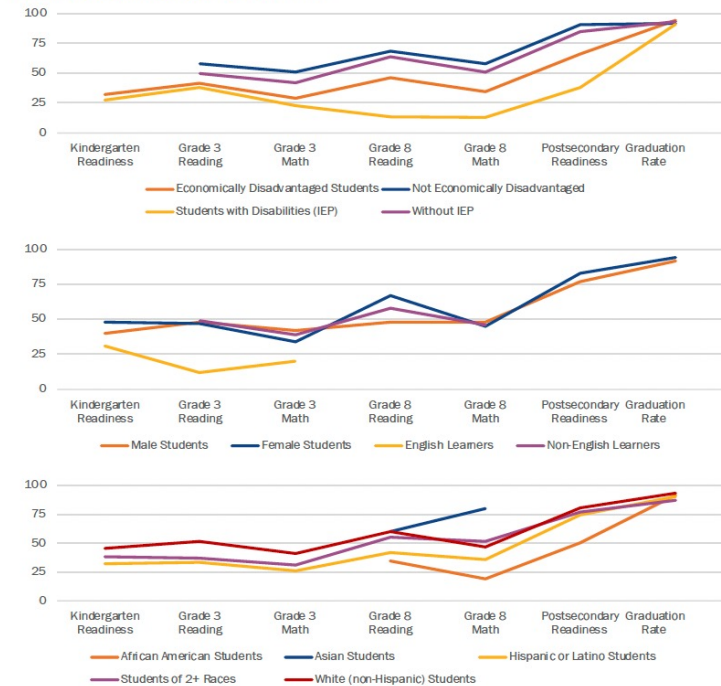


2022 Groundswell Profile Madison County Public Schools

HOW FAR ALONG ARE STUDENTS FROM DIFFERENT BACKGROUNDS?

Creating schools where all students can flourish will be an important part of building success for our communities! These seven indicators show results by student groups, each showing the most recent data released by the Kentucky Department of Education.

If a group has missing data points, that means the Department has not released those results, usually as part of policy designed to protect the privacy of individual students.



Find your data at prichardcommittee.org/2022profiles/!

Early Childhood Groundswell Thinking

Big Bold Future Metrics

BABIES WITH A
HEALTHY BIRTH
WEIGHT

31

KENTUCKY RANK
AMONG 50 STATES

CHILDREN ABOVE
200% OF
POVERTY

43

KENTUCKY RANK
AMONG 50 STATES

PRESCHOOL
PARTICIPATION
(AGES 3-4)

38

KENTUCKY RANK
AMONG 50 STATES

Promising Local Practices

- ✓ Kindergarten readiness campaigns
- ✓ Multiyear strategic plan for early childhood ecosystem
- ✓ Early literacy & numeracy community focus

Local Metrics

- ✓ Preschool enrollment
- ✓ Kindergarten readiness
- ✓ Children below poverty and 200% of poverty

The Big Groundswell Idea

- ✓ Mobilize community strengths to build up local learning and quality of life
- ✓ Use what you know about your distinctive place to find ways to support your unique learners

K-12 Groundswell Thinking

Big Bold Future Metrics

4TH GRADE
READING
PROFICIENCY

 **29**

KENTUCKY RANK
AMONG 50 STATES



8TH GRADE
MATH
PROFICIENCY

41 

KENTUCKY RANK
AMONG 50 STATES



HIGH
SCHOOL
GRADUATION

31 

KENTUCKY RANK
AMONG 50 STATES



Promising Local Practices

- ✓ Coordinated community recovery plans
- ✓ Meaningful family engagement
- ✓ High quality tutoring and mentoring
- ✓ Durable skills development

Local Metrics

- ✓ 3rd grade reading and math proficiency
- ✓ 8th grade reading and math proficiency
- ✓ Graduation rates
- ✓ Postsecondary readiness

The Big Groundswell Idea

- ✓ Mobilize community strengths to build up local learning and quality of life
- ✓ Use what you know about your distinctive place to find ways to support your unique learners

Postsecondary Groundswell Thinking

Big Bold Future Metrics

POSTSECONDARY
ENROLLMENT
(18-24)

41

KENTUCKY RANK
AMONG 50 STATES



GRADUATION
FROM 2-YEAR
INSTITUTIONS

16

KENTUCKY RANK
AMONG 50 STATES



GRADUATION
FROM 4-YEAR
INSTITUTIONS

30

KENTUCKY RANK
AMONG 50 STATES



Promising Local Practices

- ✓ Campaigns that connect every student to a post-high school pathway
- ✓ Community FAFSA campaigns
- ✓ Durable skills development

Local Metrics

- ✓ Postsecondary enrollment
- ✓ Postsecondary attainment

The Big Groundswell Idea

- ✓ Mobilize community strengths to build up local learning and quality of life
- ✓ Use what you know about your distinctive place to find ways to support your unique learners

Quality of Life Groundswell Thinking

Big Bold Future Metrics

ASSOCIATE
DEGREE OR
HIGHER (25-64)

 **43**

KENTUCKY RANK
AMONG 50 STATES



VOTER
TURNOUT

15 

KENTUCKY RANK
AMONG 50 STATES



MEDIAN
HOUSEHOLD
INCOME

 **44**

KENTUCKY RANK
AMONG 50 STATES



Together, we can build a higher quality of life for all Kentuckians if we work to:

- ✓ Strengthen early childhood opportunities
- ✓ Enhance K-12 learning
- ✓ Deepen postsecondary enrollment and completion

Let's build a Big Bold Future!

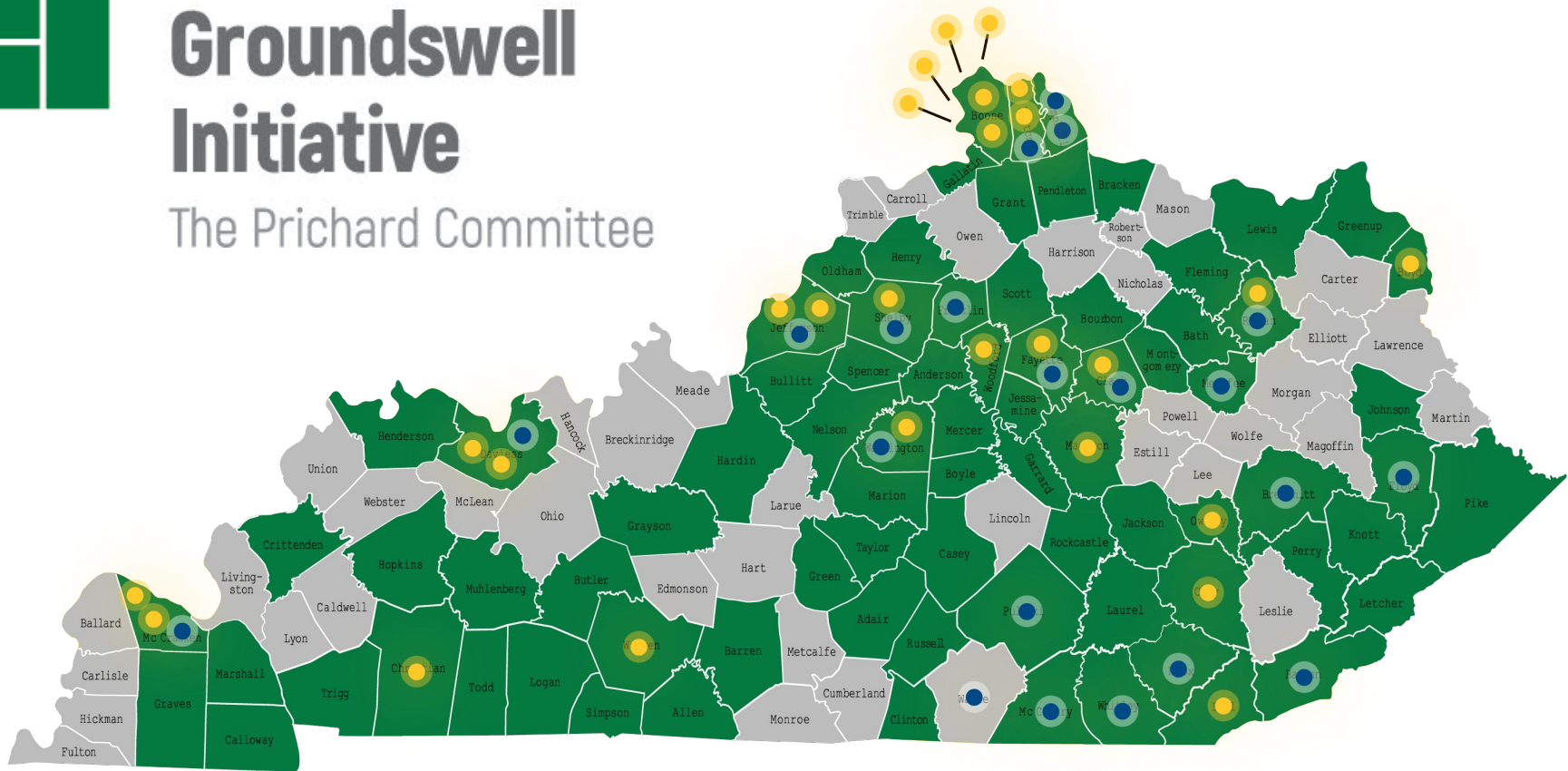
Local Metrics

- ✓ Income, unemployment & poverty
- ✓ Teen births, birth weight, obesity, smoking & flu vaccine
- ✓ Voting participation



The Groundswell Initiative

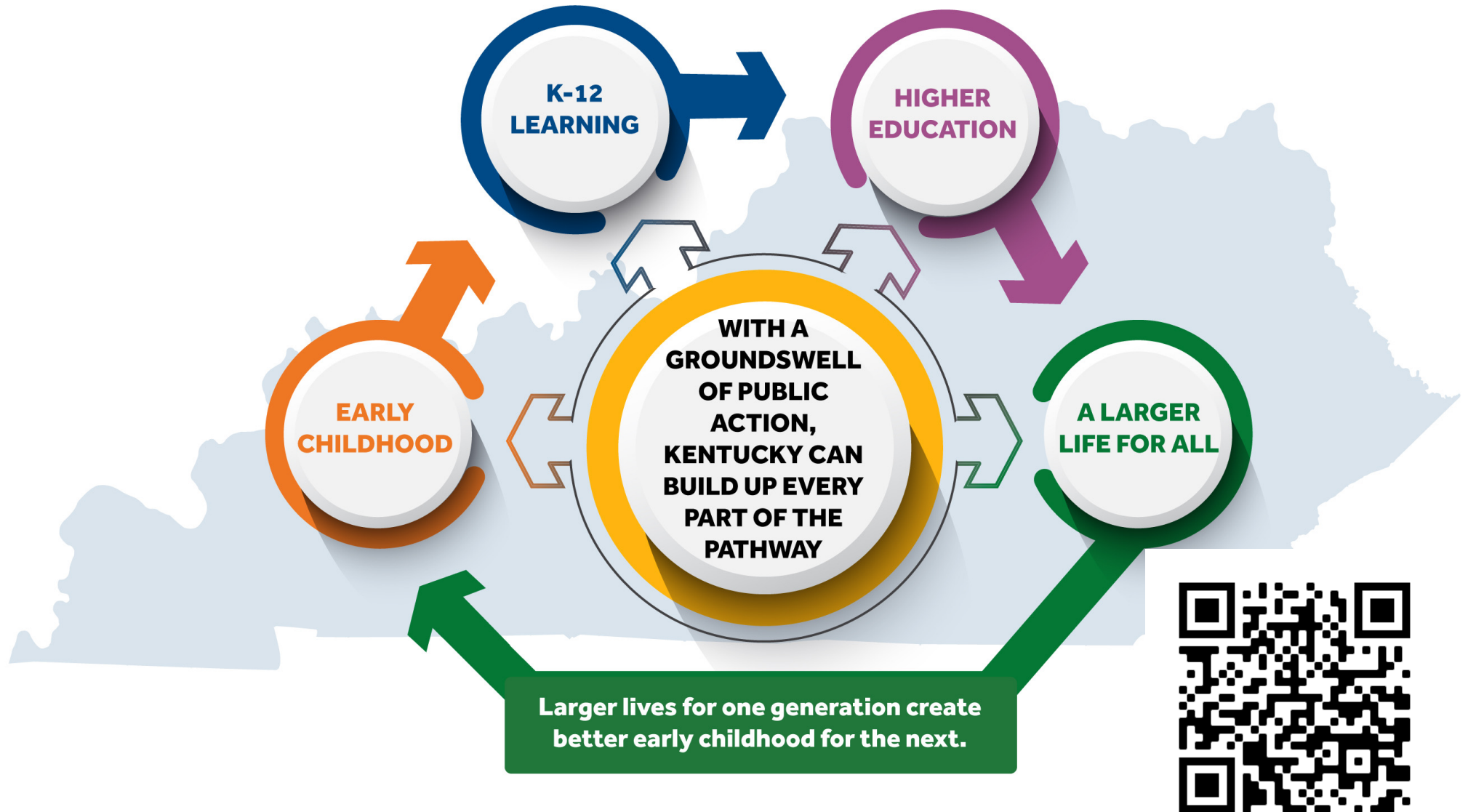
The Prichard Committee



Groundswell participants live in all these communities. Yellow spots mark initiatives they've launched and blue ones show schools with Family Friendly School certification. Visit prichardcommittee.org/groundswell, or contact groundswell@prichardcommittee.org to learn more or become part of the work.



Building a Groundswell



Join us and build the Groundswell!